

Energizing a world that demands more

Eaton's complete line of industrial control products

Variable frequency drives



Enclosed starters and VFDs



IEC power control



NEMA motor control and protection



Operator interfaces



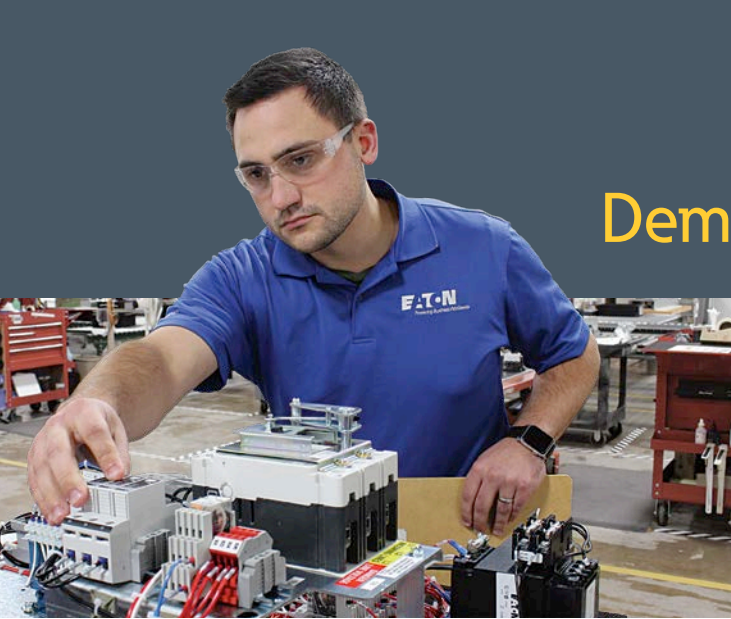
Pilot devices and sensors



Industrial control headquarters • W126 N7250 Flint Drive • Menomonee Falls, WI 53051



Powering Business Worldwide



Demand more than good enough

Demand more than good enough means working with a variable frequency drives manufacturer that joins you in the trenches to get the job done right.

Demand Eaton variable frequency drives.

Eaton.com/drives

Variable frequency drives (VFDs)



OEM drives Eaton.com/drives

Unique, space-saving drives with programmable features provide valuable energy savings for OEM applications.

- PowerXL® DE1 variable speed starters
- PowerXL DM1 compact micro drives
- PowerXL DM1 Pro advanced machinery drives



General purpose drives Eaton.com/drives

Engineered for today's demanding commercial and industrial applications, these robust drives provide reliable, efficient and precise motor control.

- PowerXL DG1 and SVX general purpose drives
- SPX high performance drives
- LCX liquid-cooled drives



HVAC drives Eaton.com/drives

Designed to significantly reduce energy consumption, these ultra-efficient drives increase cost savings for most HVAC applications.

- PowerXL DH1 HVAC drives

Enclosed drives



Standard enclosed drives Eaton.com/drives

Innovative drives offer pilot devices, circuit breaker/fused disconnects, input/output filtering and bypass capabilities.

- PowerXL DG1 enclosed drives
- PowerXL DH1 enclosed drives
- Explosion-proof drives
- NEMA® 1, 12, 3R, 4/4X, 7 enclosures



Flex Center Eaton.com/drivesflexcenter

The Drives Flex Center in Watertown, WI, provides value-engineered enclosed drive solutions to fit exact specifications, from standard modifications to complete custom design/builds.

- Quick-ship enclosed drives
- Modified standard drives
- Custom built drives
- Special enclosure drives



Advanced VFD solutions Eaton.com/drives

Engineered-to-order configurations with motor protection relays, custom bypass, custom enclosures and harmonics mitigation.

- Filtered and 18-pulse clean power drives
- Active front end drives
- Redundant drives

NEMA motor control, motor protection and enclosed control



NEMA power control

Eaton.com/an19

Freedom NEMA-rated contactors and starters with solid-state and bi-metallic overload options; universal retrofit kits; UL® listed.

- CN15 contactors
- AN19 starters with solid-state overload
- AN16 starters with bi-metallic overload



Specialty power control

Eaton.com/lightingcontactors
Eaton.com/DPContactors

Designed to deliver application versatility, simple configuration and high-performance operation.

- C25 definite purpose contactors and starters
- CN35/C30CN/A202 lighting contactors
- Vacuum contactors and starters
- B230/B330/MS series manual motor starters



Soft starters

Eaton.com/softstarters

Control acceleration and deceleration of three-phase motors with current ranges from 0.8 A to 1000 A. Compact, multifunctional, easy to install and program.

- S801+, S811+ heavy-duty soft starters
- S611 general duty soft starters
- DS7 soft start controllers



Motor protection

Eaton.com/C445

Eaton.com/C441

Eaton.com/C440

Providing the highest level of motor protection and versatility while maximizing uptime.

- Power Xpert® C445 motor management relay with zero sequence GF and user logic
- Motor Insight™ C441
- C440/XTOE electronic overload relay

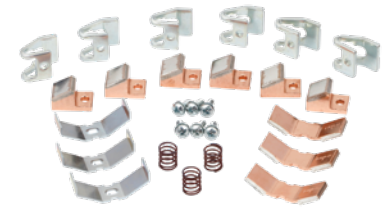


Enclosed control

Eaton.com/enclosedcontrol

Expansive, flexible offering with a variety of modifications to meet your enclosed control needs.

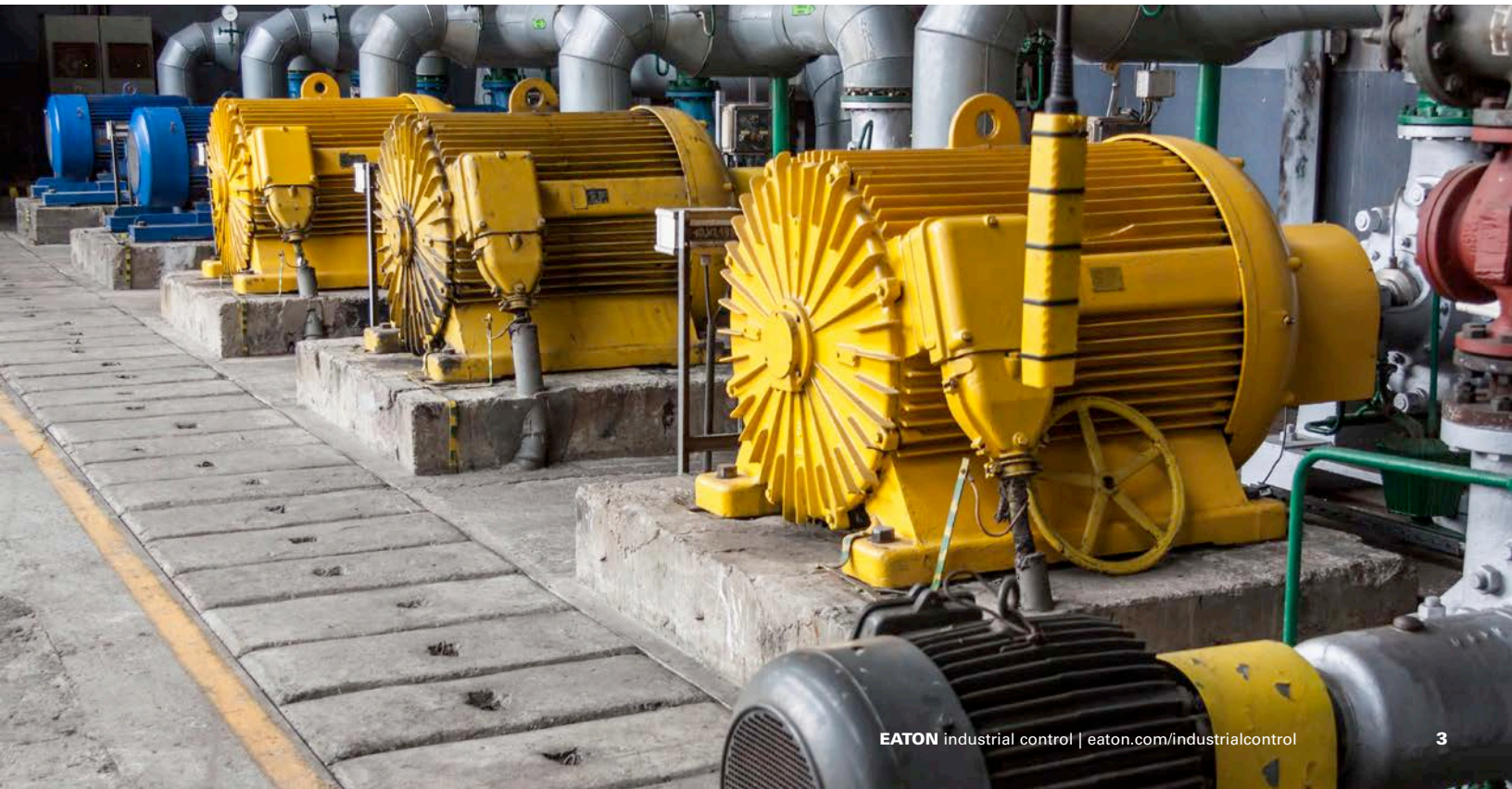
- NEMA and IEC contactors and starters
- Lighting contactors
- Reduced-voltage soft starters
- Pump panels and HVAC starters
- Custom OEM control panels



Aftermarket and renewal parts

Extend the life of existing products with quality replacement parts.

- Replacement contact kits and coils
- Legacy contactor and starter support
- Replacement mill control products



IEC motor control



XT contactors and starters

Eaton.com/xt

Compact, space-saving and easy-to-install XT line of IEC contactors and starters is the efficient and effective solution for customer applications from 7 A to 2450 A.

- Non-reversing and reversing contactors and starters
- Bi-metallic and electronic overload relays
- Safety contactors



XT manual motor protectors and combination motor controllers

Eaton.com/xt

XT IEC open non-reversing and reversing manual motor controllers combine a manual motor protector with an IEC contactor(s) to provide a complete motor protection solution.

- Bi-metallic manual motor protectors
- Electronic manual motor protectors
- Type E combination motor controllers
- Type F combination motor controllers



Electronic motor starters (EMS)

Eaton.com/electronicmotorstarter

Full starter with built-in solid-state contacts and integral overload protection. Compact size and high electrical life make it an ideal replacement for traditional contactor/overload relay starter configuration.

- Non-reversing starters
- Reversing starters
- Non-reversing and reversing with e-stop

Automation and safety



Programmable logic controllers

Eaton.com/easy

Eaton.com/PLC

Ideal for lighting, energy management, industrial control, irrigation, pump control and HVAC.

- easyE4 nano PLCs
 - Base device with or without display, 12 I/O
 - Expansion modules with digital/analog and PT100/1000
- XC300 small



Operator interface

Eaton.com/OI

Features familiar, easy-to-understand control interfaces and command methods that are used in consumer electronics.

- XV100 basic
- XV300 advanced
- XP500 panel PC



Safety products

Eaton.com/safety

Created to enhance machine operator safety and machine motor control.

- Safety controllers (easySafety)
- Programmable and discrete safety relays (ESR5)
- Safety contactors (XT) and safety pushbuttons
- LS-Titan, RS-Titan interlock and limit switches

Sensors



Photoelectric sensors

Eaton.com/sensors

Products feature powerful optics and long detection ranges and are built in robust enclosures for any industrial sensing application.

- Tubular and rectangular enclosures
- Optical variants including background rejection
- AC/DC and DC including 2-wire versions



Proximity sensors

Eaton.com/sensors

Long detection ranges, high noise immunity, and shock and vibration resistance characterize Eaton's sophisticated proximity line.

- Tubular and rectangular enclosures
- Extended detection ranges up to 100mm
- AC/DC and DC including 2-wire versions



Limit switches

Eaton.com/sensors

A full range of NEMA and IEC mechanical limit switches designed and built to survive in the most difficult application conditions.

- NEMA enclosure styles including submersible ratings
- IEC range includes metal and plastic options
- Interlock switches with safety ratings

Pilot devices and panel components



Pilot devices Eaton.com/pushbuttons

Available in many shapes and sizes, these versatile pilot devices are ideal for applications in the North American (NEMA) and global (IEC) markets.

- 20 mm and 30 mm pushbuttons
- Indicating lights and emergency stops
- Selector and palm switches
- Joysticks and potentiometers



Control stations Eaton.com/pushbuttons

General purpose and heavy-duty options with fixed element or modular design to suit virtually any industrial or commercial application.

- 22.5 mm devices
- 30.5 mm devices



Signal towers Eaton.com/SL

Provide highly versatile, completely modular signaling for key processes—and with IP66 protection, these signal towers thrive indoors and out.

- SL7—70 mm
- SL4—40 mm



Terminal blocks Eaton.com/xb

Built for years of use under demanding conditions, these terminal blocks are available in three simple and reliable terminal connection styles with universal accessories.

- Screw terminals
- Spring cage terminals
- Insulation displacement connection (IDC)



Control power Eaton.com/powersupplies

Wide selection of durable and reliable DIN rail power supplies, available in 12 and 24 Vdc, for general, compact and low-profile applications.

- PSG general purpose power supplies
- PSC compact power supplies
- PSL low-profile power supplies



Industrial relays Eaton.com/relays

Extensive relay line that can be customized to meet many application requirements.

- General purpose relays
- Solid-state relays
- Control, timing and monitoring relays
- Machine tool and terminal block relays

Additional circuit protection solutions from Eaton



Power Defense™ circuit breakers Eaton.com/powerdefense

Eaton's globally rated Power Defense circuit breakers increase personnel safety and provide a foundation for IoT, with embedded communications and metering functionality, helping to optimize your facility's performance.

For more information or for technical assistance, contact EatonCare: 877-ETN-CARE.



Bussmann® series fuses, blocks, holders and disconnect switches Eaton.com/bussmannseries

Eaton develops and manufactures Bussmann series fusible circuit protection, power management and electrical safety products for industrial, commercial and alternative energy markets.

For more Bussmann series product information, or for technical assistance, call: 855-287-7626.

Contact: IndustrialControl@eaton.com

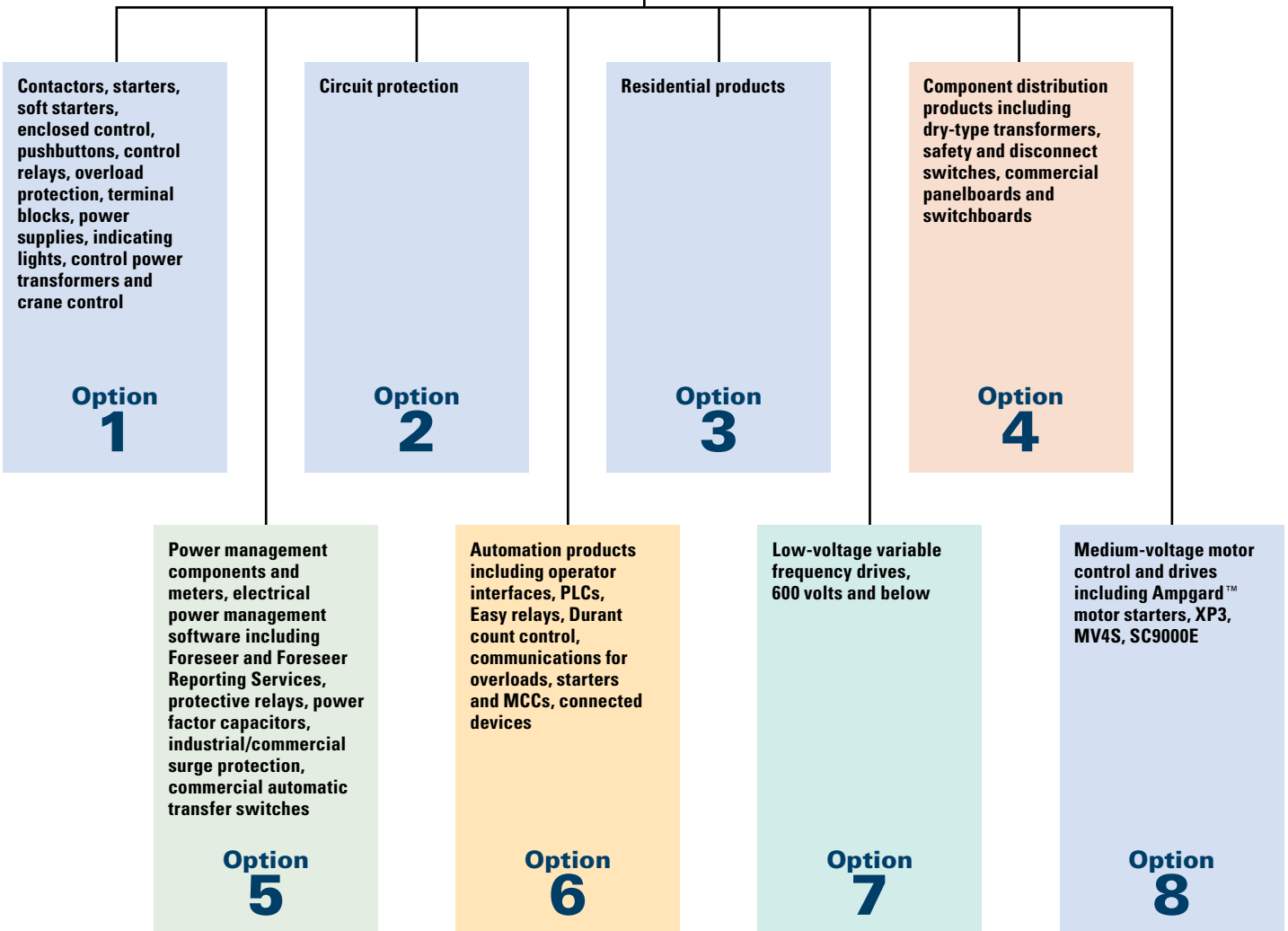
- For more information on programs, products and promotions
- For general questions/comments regarding Eaton industrial control products
- To be included on invites to Eaton's bi-monthly MOEM-focused webinar—an interactive webinar featuring product training, product tips, industry news and more

If you are a distributor seeking information on tools, promotions, new products, Eaton news and more, log into My.Eaton:

- Select "Automation and Control" in your preferences to view material related to Eaton industrial control products
- Visit the "Marketing Programs" section for the latest promotions related to industrial control



Technical Resource Center (TRC)



Welcome to the **industrial controls** in motion tour



Eaton's exclusive trailer roadshow, known as the Industrial Controls in Motion Tour, travels the U.S. and Canada year-round. Schedule your on-site tour today.

Eaton travels cross country with the Industrial Controls in Motion Tour, showcasing how our control components help cut costs, improve efficiencies, optimize equipment performance and maximize uptime.

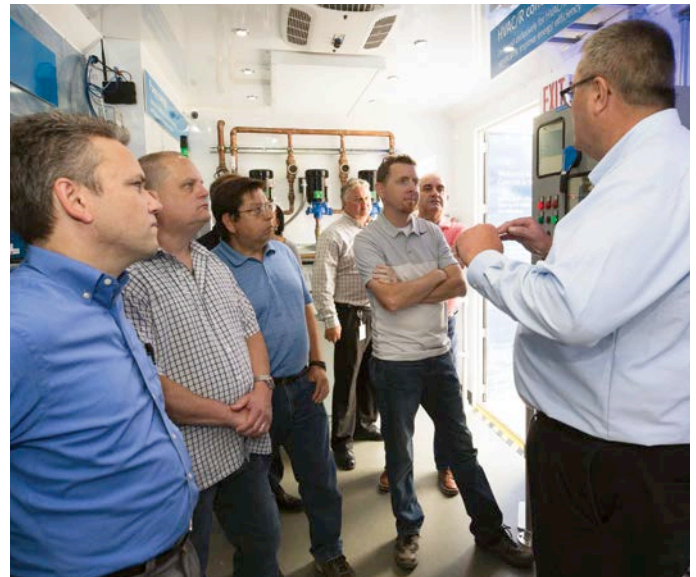
Inside the trailer roadshow, 40 feet of the latest Eaton innovations are on display in fully functional, real-world environments. Our demonstrations are built to simulate day-to-day challenges that users face and provide a variety of solutions. Featured applications include HVAC/R, pumping, process industry and material handling.

The Industrial Controls in Motion Tour is a hands-on, educational opportunity for OEMs, institutions, commercial facilities, mechanical contractors and end users. It's designed for you and your customers. To schedule a free, personal, on-site tour, talk to your Eaton salesperson today.

Depend on Eaton

Eaton's industrial control portfolio offers a unique combination of systems, components and services that ensure you minimize risk and optimize your investments.

Our customized, innovative solutions can be trusted to keep machines, motors and systems running efficiently in industrial or commercial settings. These same solutions extend product life cycles and are easily upgraded to meet changing regulatory and processing requirements. Eaton is dedicated to empowering your business.



When the trailer arrives at your location, you and your customers will experience interactive demonstrations and live presentations. This is your chance to see Eaton's products in action.

We make what matters work.*

* At Eaton, we believe that power is a fundamental part of just about everything people do. Technology, transportation, energy and infrastructure—these are things the world relies on every day. That's why Eaton is dedicated to helping our customers find new ways to manage electrical, hydraulic and mechanical power more efficiently, safely and sustainably. To improve people's lives, the communities where we live and work, and the planet our future generations depend upon. Because that's what really matters. And we're here to make sure it works.

See more at [Eaton.com/whatmatters](https://www.eaton.com/whatmatters)

Learn more at
[Eaton.com/industrialcontrol](https://www.eaton.com/industrialcontrol) and [Eaton.com/controltour](https://www.eaton.com/controltour)

Eaton
1000 Eaton Boulevard
Cleveland, OH 44122
United States
[Eaton.com](https://www.eaton.com)

© 2021 Eaton
All Rights Reserved
Printed in USA
Publication No. SA083077EN / Z24864
March 2021

Follow us on social media to get the latest product and support information.



Eaton is a registered trademark.

All other trademarks are property of their respective owners.